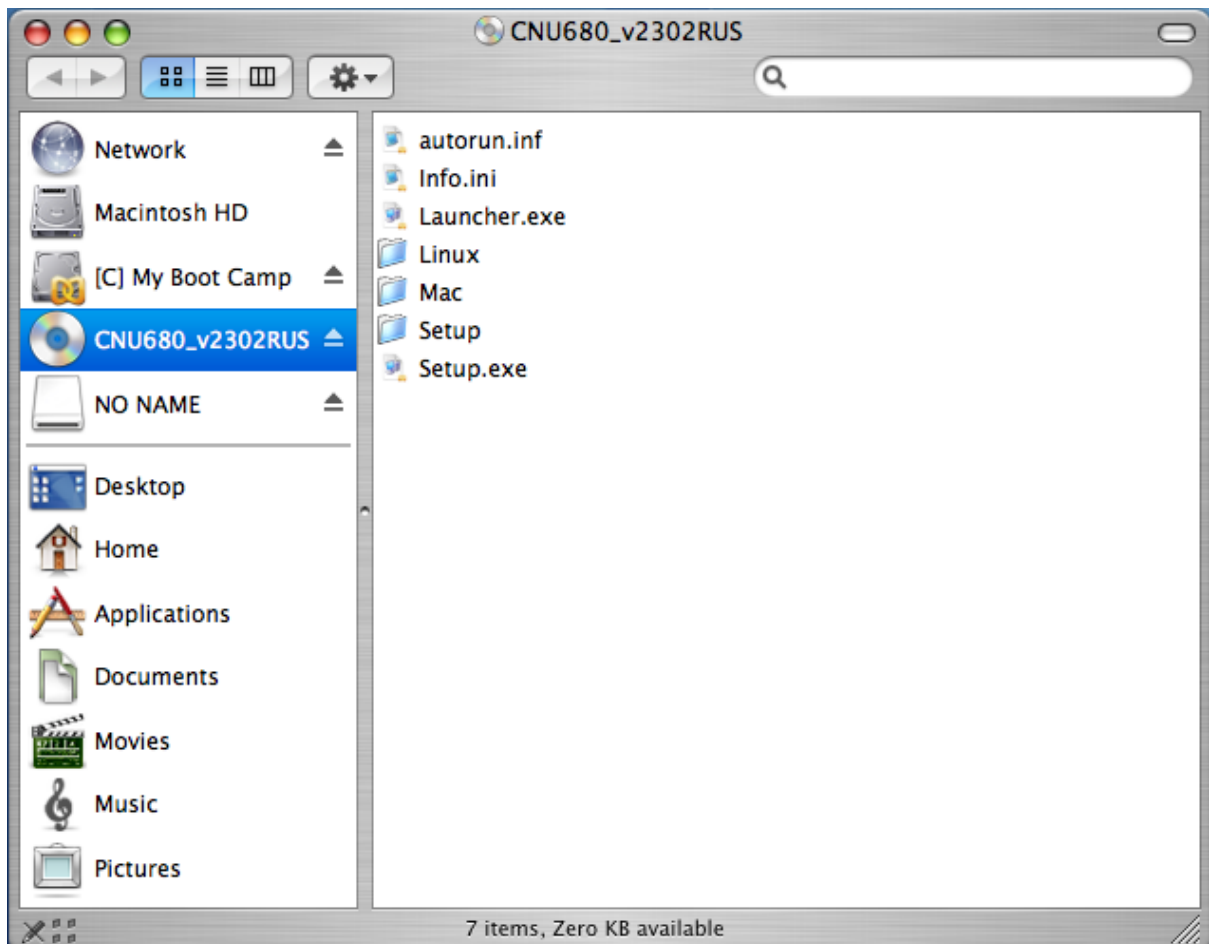
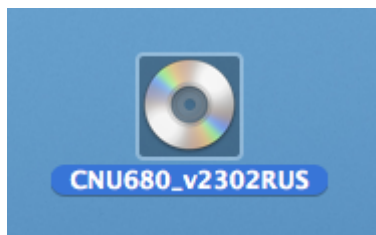


CNU680 User Manual MAC OS

Modem Recognition

Plug the CNU680 into the USB port of computer

Wait until displaying the CNU680 CD drive Icon on the desktop



Open the CD by double clicking the icon.

Open the terminal window and type "cd /Volumes/CNU680/Mac"

Move to Mac folder in the CD drive.

Run the CDSWITCH after typing “sudo sh SwitchDriver.sh”

```
Last login: Sat Oct  6 01:20:22 on console
Welcome to Darwin!
ju-jinyongyi-keompyuteo:~ Home$ cd /Volumes
ju-jinyongyi-keompyuteo:/Volumes Home$ ls
CNU680 Macintosh HD    NO NAME
ju-jinyongyi-keompyuteo:/Volumes Home$ cd CNU680 /
ju-jinyongyi-keompyuteo:/Volumes/CNU680 Home$ ls
Info.ini      Launcher.exe    Linux          Mac            Setup          Setup.exe
autorun.inf
ju-jinyongyi-keompyuteo:/Volumes/CNU680 Home$ cd Mac/
ju-jinyongyi-keompyuteo:/Volumes/CNU680/Mac Home$ ls
CDSWITCH.kext      D-50 User Manual MAC OS.doc    D-50 User Manual
MAC OS.pdf         RDEVCHG          SwitchDriver.sh
```

When it displays “Insert Modem”, unplug and plug the CNU680 device

```
ju-jinyongyi-keompyuteo:/volumes/CNU680/Mac Home$ ls
CDSWITCH.kext      D-50 User Manual MAC OS.doc    D-50 User Manual
MAC OS.pdf         RDEVCHG          SwitchDriver.sh
ju-jinyongyi-keompyuteo:/volumes/CNU680/Mac Home$ sudo sh SwitchDriver.sh
Password:
--> CDSWITCH Mac Switch\n
kextload: kext /System/Library/Extensions/AppleThermal.kext is not valid
kextload: extension /tmp/CDSWITCH.kext appears to be valid
kextload: loading extension /tmp/CDSWITCH.kext
kextload: /tmp/CDSWITCH.kext loaded successfully
kextload: loading personalities named:
kextload:   VendorSpecificType05
kextload: sending 1 personality to the kernel
kextload: matching started for /tmp/CDSWITCH.kext
RDEVCHG Ver 1.0!
Insert Modem!
Please Wait.
.
..
...
....
.....

Success SwitchMode!
ju-jinyongyi-keompyuteo:/volumes/CNU680/Mac Home$
```

When it displays “Success SwitchMode!”, the CNU680 is recognized normally

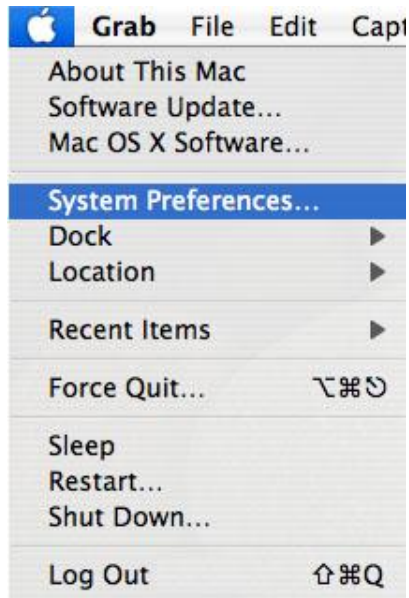
Move to the “/dev” folder and check there “tty.usbmodem3811” is

```
ptyp8      ptyt4      random      ttyrd      ttyv9
ptyp9      ptyt5      rdisk0      ttyre      ttyva
ptypa      ptyt6      rdisk0s1    ttyrf      ttyvb
ptypb      ptyt7      rdisk0s3    ttys0      ttyvc
ptypc      ptyt8      rdisk0s5    ttys1      ttyvd
ptypd      ptyt9      rdisk1      ttys2      ttyve
ptype      ptyta      rdisk2      ttys3      ttyvf
ptypf      ptytb      stderr      ttys4      ttyw0
ptyq0      ptytc      stdin       ttys5      ttyw1
ptyq1      ptytd      stdout      ttys6      ttyw2
ptyq2      ptyte      tty         ttys7      ttyw3
ptyq3      ptytf      tty.Bluetooth-Modem  ttys8      ttyw4
ptyq4      ptyu0      tty.Bluetooth-PDA-Sync  ttys9      ttyw5
ptyq5      ptyu1      tty.modem   ttysa      ttyw6
ptyq6      ptyu2      tty.usbmodem3811  ttysb      ttyw7
ptyq7      ptyu3      ttyp0       ttysc      ttyw8
ptyq8      ptyu4      ttyp1       ttysd      ttyw9
ptyq9      ptyu5      ttyp2       ttyse      ttywa
ptyqa      ptyu6      ttyp3       ttysf      ttywb
ptyqb      ptyu7      ttyp4       ttyt0      ttywc
ptyqc      ptyu8      ttyp5       ttyt1      ttywd
ptyqd      ptyu9      ttyp6       ttyt2      ttywe
ptyqe      ptyua      ttyp7       ttyt3      ttywf
ptyqf      ptyub      ttyp8       ttyt4      urandom
ptyr0      ptyuc      ttyp9       ttyt5      vn0
ptyr1      ptyud      ttypa       ttyt6      vn1
ptyr2      ptyue      ttypb       ttyt7      vn2
ptyr3      ptyuf      ttypc       ttyt8      vn3
ptyr4      ptyv0      ttypd       ttyt9      zero
ptyr5      ptyv1      ttye        ttyta
ptyr6      ptyv2      ttyf        ttytb

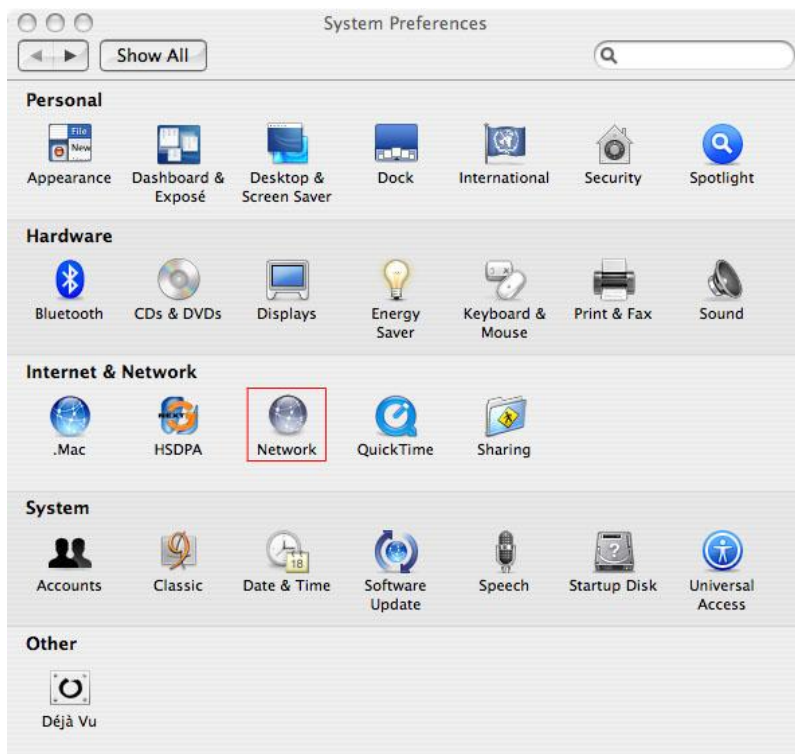
jinyong-juyi-powerbook-g4-15:/dev jinyongju$
```

Setting Network

Select System Preference in Mac System Menu

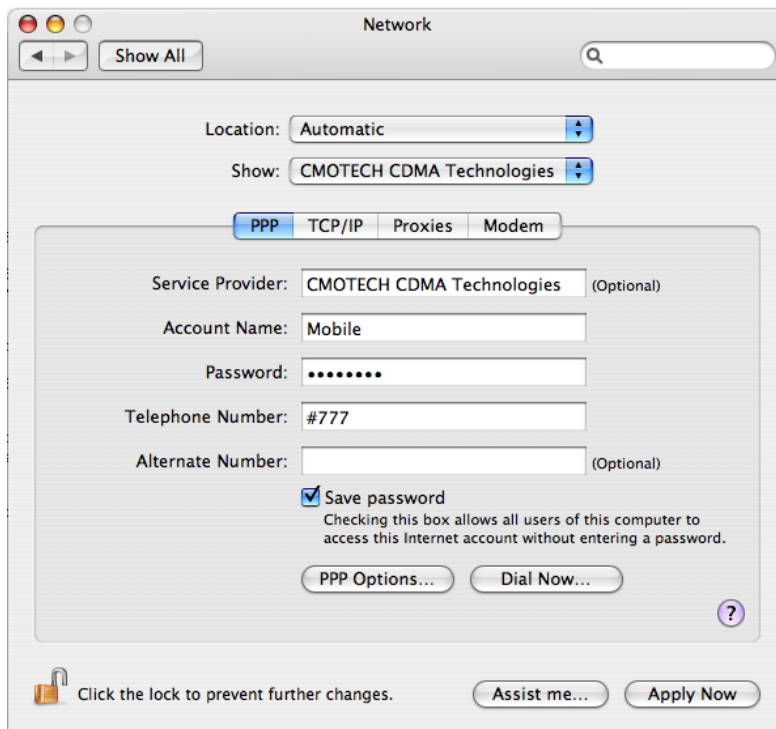


Select Internet & Network in Network



When Network setting window displays, Select a “CMOTECH CDMA Technologies” in Show combo box.

Input Account Name, Password, Telephone Number



The screenshot shows the 'Network' window with the 'PPP' tab selected. The 'Location' is set to 'Automatic' and 'Show' is set to 'CMOTECH CDMA Technologies'. The 'Service Provider' is 'CMOTECH CDMA Technologies (Optional)'. The 'Account Name' is 'Mobile', the 'Password' is masked with dots, and the 'Telephone Number' is '#777'. The 'Alternate Number' field is empty. The 'Save password' checkbox is checked. At the bottom, there are buttons for 'PPP Options...', 'Dial Now...', 'Assist me...', and 'Apply Now'.

Location: Automatic

Show: CMOTECH CDMA Technologies

PPP TCP/IP Proxies Modem

Service Provider: CMOTECH CDMA Technologies (Optional)

Account Name: Mobile

Password:

Telephone Number: #777

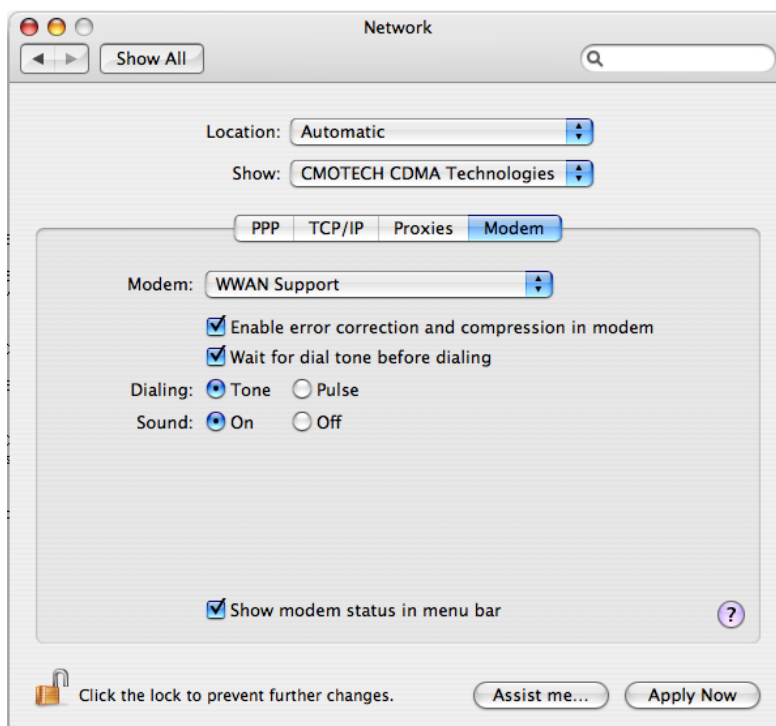
Alternate Number: (Optional)

☒ Save password
Checking this box allows all users of this computer to access this Internet account without entering a password.

PPP Options... Dial Now...

Click the lock to prevent further changes. Assist me... Apply Now

After Selecting “Modem Tab” and “WWAN Support”, click “Apply Now” button and finish network setting



The screenshot shows the 'Network' window with the 'Modem' tab selected. The 'Modem' is set to 'WWAN Support'. The 'Enable error correction and compression in modem' and 'Wait for dial tone before dialing' checkboxes are checked. The 'Dialing' is set to 'Tone' and the 'Sound' is set to 'On'. The 'Show modem status in menu bar' checkbox is checked. At the bottom, there are buttons for 'Assist me...' and 'Apply Now'.

Location: Automatic

Show: CMOTECH CDMA Technologies

PPP TCP/IP Proxies Modem

Modem: WWAN Support

☒ Enable error correction and compression in modem

☒ Wait for dial tone before dialing

Dialing: ☒ Tone ☐ Pulse

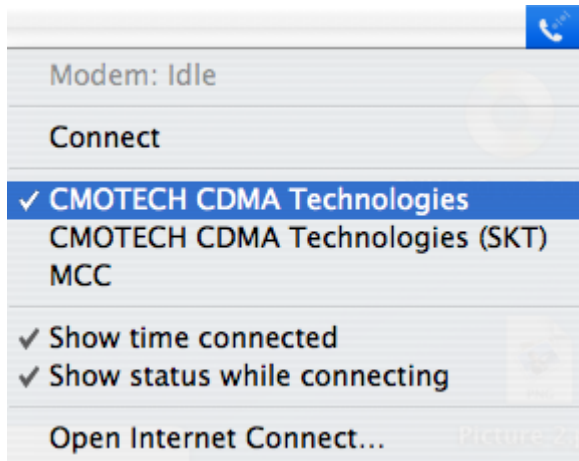
Sound: ☒ On ☐ Off

☒ Show modem status in menu bar

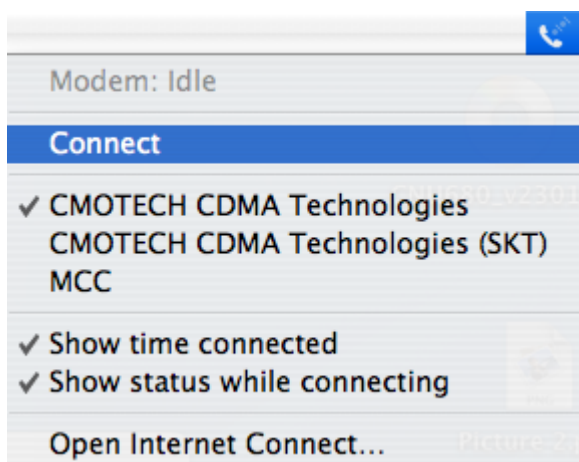
Click the lock to prevent further changes. Assist me... Apply Now

Dial Up Network

Click the dial up network on the top of right side in the menu bar\
Click “CMOTECH CDMA Technologies”



Click Connect



When network is connected, a connection time is displayed



To Disconnect

Click Disconnect in a dial up menu

